



SEE Civil is engaged by Logan City Council to construct the \$80 million Loganlea Road upgrade between the Logan Motorway at Meadowbrook and the northbound M1 on-ramp at Slacks Creek.

Located south of Brisbane, Queensland, Logan is one of the fastest-growing regions in the state. The Loganlea Road upgrade is a major infrastructure project to improve road safety and accessibility for commuters and to support the continued growth of the area.

The project involves widening the road to six lanes and

upgrading existing intersections. The upgrade includes the construction of dedicated cycle lanes and footpaths and will promote active and alternative transport options.

The Loganlea Road upgrade will significantly improve traffic flow and the four-lane road will also provide better access to public transport for commuters traveling to and from Brisbane.

The Loganlea Road upgrade is a critical infrastructure project that will support the continued growth of the Logan region.

Construction began in April 2023 and is expected to be completed late-2024.

This project is being delivered under Logan City Council's Major Roads Program and is partly funded by the Australian Government through the Investment Road and Rail Program.

Scope of Work:

- widen Loganlea Road to six lanes (three lanes in each direction) from Logan Motorway to Nujooloo Road
- add another northbound lane to the Ray Hodgson Bridge (up to the M1 Motorway on-ramp)
- Bridge construction and strengthening of the existing bridge superstructure
- site establishment & Traffic Management
- relocation or protection of services – relocating and protecting electricity, gas, water, and telecommunications infrastructure
- clearing and grubbing, topsoil stripping and storage, the establishment of waterway barriers
- earthworks

JBJ CIVIL

BUILDING SOLID FOUNDATIONS

- Grader Hire
- GPS, UTS millimetre machine control for all final trim works
- Late model, well presented and serviced machines
- Highly skilled operators with extensive knowledge
- Road, Rail, subdivision, civil, mining construction

Phone: 0418 409 131

Email: jp@bjcivil.com

A family owned and operated mobile welding company with over 15 years in the industry.

Phone Cain Pearson: 0430 746 030

www.five92fabrications.com.au

- Welding Rentals
- Mobile welding and fabrication
- Servicing the construction, civil and mining sector.

GLANMIRE CONSTRUCTION

Specialising in Major and minor sewer and water works, Stormwater installation, deep excavations and trench box installation. Constructing Concrete structures, Manholes, pits and chambers.

EQUIPMENT

- 35 Tonne Excavator
- 25 Tonne Zero swing excavator
- 5 Tonne Excavator with cab
- remote control trench roller
- utes and tools stocked with pipe laying equipment

Ph: 0450 913 754

email: glanmireconstruction@hotmail.com



ALL ABOUT LIFTING & SAFETY

NOW AVAILABLE FOR HIRE!

OVERHEAD FALL PROTECTION SYSTEMS



AIR HOOK LITE



AIR HOOK TRAILER



ANCHOR POINT BLOCK

BRISBANE • SUNSHINE COAST • GOLD COAST

(07) 3889 7774 • 0499 211 150 • SCOTT@ALLABOUTLIFTING.COM.AU

WE ALSO OFFER A MOBILE TESTING FACILITY

- All equipment is recorded on registers / certificates
- Equipment in need of repairs can be done same day
- Complete with a highly competent team
- No removing & transporting equipment from site
- NATA Accredited laboratory
- Peace of mind & convenience
- Save on downtime
- We come to you



- fauna protection
- pavement and surfacing works
- upgrade of three existing signalised intersections
- installing new stormwater infrastructure and kerbing to improve road and verge drainage
- new shared pathway northbound and upgrades to the existing southern pathway.

Logan City Council is delivering a 2.3 km upgrade of Loganlea Road, from the Logan Motorway, Meadowbrook to the Pacific Motorway, Slacks Creek to reduce congestion and help get you home safely.

This Upgrade Means:

- More reliable travel times
- Safer intersections
- Improved connectivity to support Logan's southwest

Project Update

The transformation of a major City of Logan thoroughfare is continuing above and below the ground.

Logan City Council has begun widening the Ray Hodgson Bridge on Loganlea Rd at Slacks Creek as part of a \$77.7 million upgrade of the stretch from Meadowbrook to the M1.

Over the two months, eight 'piles' will be poured up to 7 metres into the bedrock under Slacks Creek.

They will carry the weight of an additional north-bound traffic lane, footpath and bikeway.

Steel 'liners' will be driven into the ground to the full depth of the piles, before the earth is drilled out from inside each liner.

The steel reinforced piles will then be poured into the excavated holes. The new 70m long bridge deck will be built over the top in mid-2024.

Infrastructure Chair, Councillor Teresa Lane, said bridge building is complex work but the disruption to traffic, residents and businesses would be minimal.

"The benefits will be huge. The city will undergo some tremendous growth in coming years, and it's crucial we have a roads network to cope, and get drivers home quicker and safer," Cr Lane said.

Division 3 Councillor Mindy Russell said the bikeway and footpath would be well used.

"This work is unlocking Logan's potential, and I'm looking forward to seeing the extra pedestrian and bike riding

The bridge is named after former Logan Mayor Ray Hodgson who served the city from 1990 to 1991.

Subcontractors and Suppliers

- A1 Highways
- All About Lifting & Safety Pty Ltd
- Allstate Linemarking Services Pty Ltd
- Auslow Concreting And Construction
- Austek Asphalt Services Pty Ltd
- Australian Civil Solutions
- Aztech Services Australia Pty Ltd
- Big Chief Hire Pty Ltd
- Bogside Mining Industries
- BSF Mobile Cranes Pty Ltd
- Caporn Piling
- CDA Eastland Trade Supplies Pty Ltd

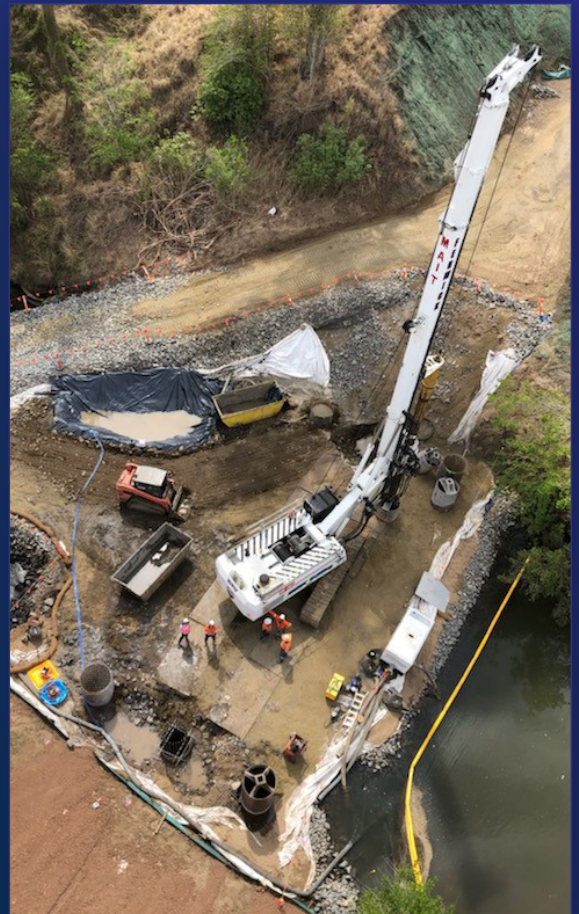


- Bored Piers
- 300mm to 3 Metres Diameter
- Up to 30 Metres in Depth
- 10 Rigs Available
- Track & Rubber Tyred Drilling Rigs
- Low Head Height Machines MAIT EC35 & MAIT Baby Drill
- New MAIT Hr130 THD Track Machine
- 33t Excavator with Specialised Drilling Head & Vibrating Hammer
- 600 Diameter DOWN THE HOLE HAMMER – Capable of 8m in depth
- Drill Rig 750 Diameter to a depth of 20m

Proud to be associated with SEE Civil on the Loganlea Road project

**PHONE JASON FENWICK
(07) 3800 8311**

fenwick.drill@gmail.com | www.fenwickdrilling.com.au





- Five92 Fabrications Pty Ltd
- Foundation Specialists Group
- FSA Consulting Engineers Pty Ltd
- Geofabrics Australasia Pty Ltd
- Glanmire Construction Pty Ltd
- Global Synthetics Pty Ltd
- GM Poles Pty Lts
- Green Consulting Group Pty Ltd
- H2flow Hire (Water Trucks Pty Ltd)
- Iplex Pipelines Australia P/L
- JBJ Civil Pty Ltd
- JCK Civil Pty Ltd
- Juco Earthmoving Pty Ltd
- Kenro Metal Services
- Livingstone Engineering
- Master Steel
- MB Civil Contracting Pty Ltd
- Mitchelmore Transport Pty Ltd
- Mooven Pty Ltd
- Nuway Loagn (Mimeway Pty Ltd)
- Ozz Crete Pty Ltd
- PJ Bowers Pty Ltd
- Provac Australia Pty Ltd
- Pumpcon Concrete Pumping Pty Ltd
- Qld Bulk Landscapes & Civil Supplies
- Qld Kerb & Channel Trust
- Quick Core & Sawing Pty Ltd
- Quickcell Technology Products Pty Ltd
- R W & G Johnston Pty Ltd
- R.A.D Civil And Drainage
- Supagreen Lawn Programmes Pty Ltd
- Sweepers Pty Ltd
- TKR Heavy Equipment
- Trico Asphalt Pty Ltd (Cod)
- Wear Parts Australia

- Celotti Pty Ltd
- Centenary Landscaping Supplies
- Civforce Traffic Management Pty Ltd
- Concut Pty Ltd
- Cooper Civil Pty Ltd
- Crushing Dynamics (Qld) Pty Ltd
- CV Infrastructure Services Pty Ltd
- Dynamic Tree Solutions
- Elite Liquid Waste
- Enviropost Australia
- Ezyquip Hire Pty Ltd
- Fenwick Jaylee Pty Ltd

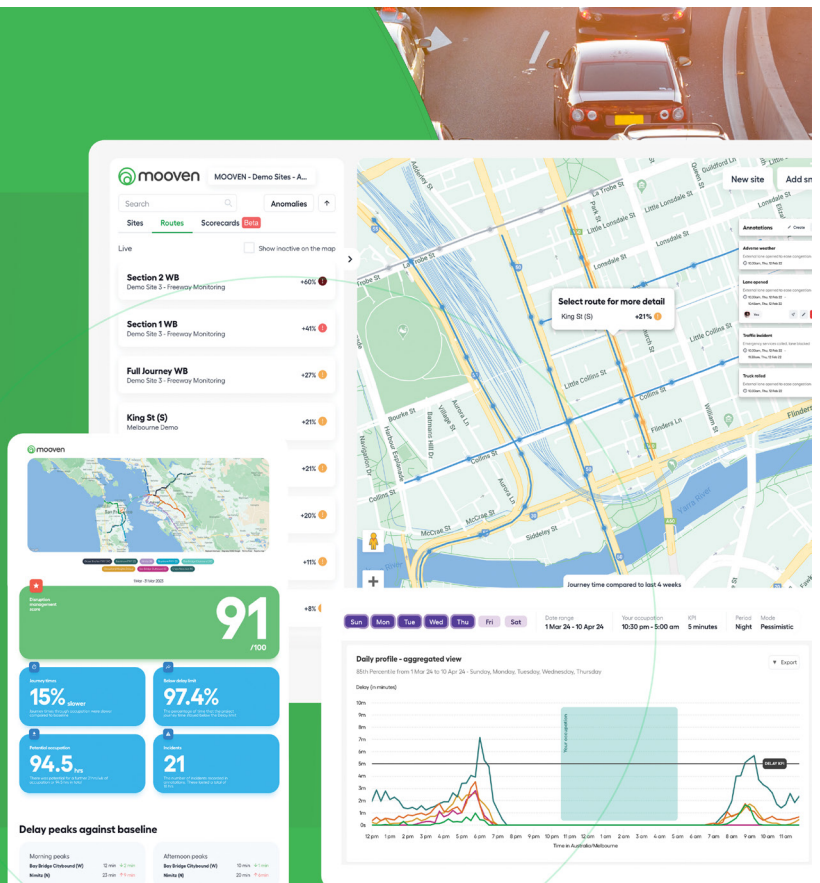


Compliance monitoring and reporting? We have you covered.

We scale to all sizes of projects with no hardware, or hardware combined options. All within a leading technology platform - reducing the hassle, increasing reliability:

- Set up in as little as 10 minutes.
- Monitor live conditions against project KPIs.
- Easy reporting against baselines and project scorecards.
- Quickly adjust monitoring without the need for site visits.

mooven.com



Mooven is an AI-powered platform designed to accelerate infrastructure delivery, transform efficiency and reduce complaints.