

# Indooroopilly Roundabout



The Moggill Road corridor upgrade will alleviate congestion and improve safety for road users travelling through Brisbane's busy western suburbs with works to improve the overall operation of the corridor to help residents get home sooner and safer.

Council has identified the Moggill Road and Coonan Street intersection at Indooroopilly as a location for upgrade to improve safety and reduce congestion. This stage is a joint initiative funded by Brisbane City Council and the Australian Government.

The Indooroopilly roundabout upgrade project includes the construction of an overpass from Coonan Street over Moggill Road to improve overall intersection operation and safety for all road users as well as ensure it can cater for future traffic demands.

**Georgiou Group** has been awarded the main construction contract to deliver the upgrade now the removal of the former Audi dealership site is complete.

## About the Project

Moggill Road and Coonan Street are two major arterial roads intersecting in a semi-controlled roundabout at Indooroopilly. The roads link Brisbane's outer west and south-western suburbs and the Brisbane Central Business District (CBD).

The intersection caters for high traffic volumes and experiences significant congestion in peak hour periods, with:

- 38,000 vehicles per day to the west of Moggill Road
- 47,000 vehicles per day to the east of Moggill Road

- 25,000 vehicles per day along Coonan Street.

Major queuing is experienced on approaches to the intersection, resulting in delays for all road users.

The intersection has a high crash history, with 32 recorded incidents between 2013-18, resulting in 10 hospitalisations and 17 requiring medical treatment. There were 12 further incidents between 2018 and 2020 including 3 hospitalizations, 5 medical treatment and 4 minor injuries. The Moggill Road and Coonan Street corridors border commercial, retail and residential land area.

The intersection also has limited pedestrian and active transport connectivity and accessibility.


The intersection will continue to provide a critical link to adjoining suburbs, the CBD and broader Brisbane for all transport modes, supporting commercial and residential development in the area.

Ensuring the intersection can cater for future traffic demands is critical, as well as providing safe and accessible transport options for all road users.

## Project Benefits

Once complete, the Indooroopilly roundabout upgrade will:

- improve safety for road users and pedestrians at the intersection and nearby streets by allowing free flowing traffic on Moggill Road
- improve traffic flow and reduce travel times with the construction of an overpass for vehicles on Coonan Street
- create more accessible active transport options by upgrading shared pedestrian and cycle paths,



**Ph: (07) 3715 8799**  
Email: [water@h2flow.com.au](mailto:water@h2flow.com.au)  
Website: [www.h2flow.com.au](http://www.h2flow.com.au)

- Water trucks & trailers
- Wet or dry hire
- Drinking water
- Mini tippers
- Mini water trucks & trailers
- Mini vacuum trucks & trailers
- Pressure cleaner trailers
- Sandbag filler trailers
- Polymer application trailers

**HELSEL ENTERPRISES**  
TANDEM TIPPERS | WATER TRUCKS  
TRUCK & DOGS  
EXPERIENCED, HONEST, AND RELIABLE



**PH: 0403 188 913**  
Supply Nation Email: [admin@helsel.com.au](mailto:admin@helsel.com.au)





**Waste Treatment Services**  
Safe solutions for complex hazardous material treating contaminated soils, NDD muds, hazardous and regulated wastes, chemicals, waste sludges and wastewater in state-of-the-art facilities.

**Find out how we can support your project at [hiquality.com.au](http://hiquality.com.au)**

- improving active travel opportunities and connectivity
- create a greener space with new landscaping across the site.

## Project Features

Features of the preferred design include:

- constructing an overpass that takes Coonan Street over Moggill Road, allowing through traffic on Moggill Road to flow freely
- upgrading the existing Moggill Road service road, to connect the Coonan Street overpass with Moggill Road
- changing access at Keating Street to remove the right turn in and out, to improve safety
- changing access at Payne Street to remove the left turn in, to improve safety and traffic flow on Moggill Road
- closing Nelson Parade at Moggill Road due to poor sight lines
- providing shared pedestrian and cycle paths through the project area
- retain left turn access from Moggill Road into Stamford Road.

Council is also investigating options for a cycling connection between the intersection and Indooroopilly Riverwalk.

## Subcontractors and Suppliers

- Altus Traffic
- Helshel Enterprises
- TVE Pty Ltd
- Sniffers Plant Hire
- Vac Group Operations Pty Ltd
- Bogside Mining Industries Pty Ltd
- Bemcove Pty Ltd
- Side by Side Scaffolding & Rigging Services
- LCR Group Pty Ltd
- CDA Eastland Trade Supplies
- Brisbane Directional Boring
- Adept Plant Hire Pty Ltd
- Final Strike Contracting
- Murrays Concrete Cutting & Demolition Pty Ltd
- Advanced Civil Group Pty Ltd

- RAW Skips
- Hi-Quality Waste Treatment Services Pty Ltd
- Allstate Linemarking Services Pty Ltd
- Murray Plant and Civil Pty Ltd
- Ground Support Systems
- Xroads
- Big River Group P/L
- Matrix Acoustics
- H2Flow
- Zero Asbestos Pty Ltd
- HL Landscapes Pty Ltd
- Conplant Pty Ltd
- Castle's Slipforming Australia Pty Ltd
- Noffke Welding
- Global Line Marking Services
- A1 Highways Pty. Ltd.
- Fastweld Engineering Pty Ltd
- Reinforced Concrete Pipes Australia (QLD) Pty Ltd
- Ross Lifting Pty Ltd
- Lyndons
- Origin Fencing
- Belwar Civil Pty Ltd
- Epic Environmental
- Moddex Group Pty Ltd
- Newcastle Cut n Drill
- Caporn Piling
- Xroads
- Quickcell Technology Products Pty Ltd
- The Rix Group
- RAD Civil and Drainage Pty Ltd
- Rix Ground Engineering Pty Ltd
- HL Landscapes Pty Ltd
- Queensland Civil Solutions Pty Ltd



- Traffic Control
- Planning & Permits
- Equipment Hire
- Event Management
- Training Services
- Engineering Services

P: (07) 3292 4400 | E: qld\_operations@altustraffic.com.au



- 20 Years of Experience on Major Highway and Rail Projects
- Specialising in Final Trim UTS Graders
- Available for projects anywhere on the East Coast
- Fleet of Late Model John Deere Graders fitted with Trimble Earthworks

Phone: 0421 515 488  
www.adeptplanthire.com.au



# MURRAY

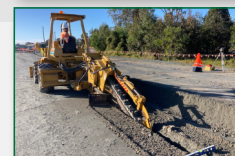
## PLANT & CIVIL

### P T Y L T D

**SPECIALISING IN  
CIVIL CONSTRUCTION,  
PLANT HIRE,  
COMMERCIAL, RESIDENTIAL  
AND ROAD PROJECTS**

#### EQUIPMENT AVAILABLE:

- Tipplers - single & twinsteers
- Tipplers - 2t to 4t  
(single and crew cabs)
- Excavators - 3t to 40t
- Trencher
- Water Carts



Phone: 0457 492 597

www.murrayplantandcivil.com.au

Email: john@murrayplantandcivil.com.au