

Barrams Road Extension



Construction has started on the Barrams Road extension at Stockland Providence, located in South Ripley, which will provide residents with a secondary access point to the community.

The one-kilometre road extension will allow direct access to Sandstone Boulevard, White Rock, and is expected to be complete in early 2024, subject to weather conditions.

Barrams Road extension will also support the delivery of 2000 lots to help meet the increasing demand for homes in Brisbane's Western Growth Corridor.

Stockland Project Director, David Franklin, said the project would provide key road infrastructure for the growing community.

"The Barrams Road extension improves travel times and accessibility for our residents at Stockland Providence," Mr Franklin said.

"Stockland Providence is a well-connected and vibrant community close to schools, shops and health and education facilities.

"As the community grows, plans are also underway for a proposed village centre, additional schools, a satellite hospital, and more than 200 hectares of parklands and sporting fields."

Stockland Providence is currently home to more than 4000 residents, and over the next 20 years, this is expected to grow to approximately 20,000 residents. It's just another growth area in our rapidly expanding region.

Located in South Ripley, the new road will provide residents of Providence East and other developments in the

catchment with a secondary entrance point at Sandstone Boulevard, as well as quicker access to the Centenary Highway and White Rock.

The one-kilometre road extension, which is already under construction, is expected to be completed in early 2024, subject to weather conditions.

The Barrams Road extension will also support the delivery of 2,000 lots to help meet the increasing demand for homes in Brisbane's Western Growth Corridor.

These areas have been identified by the Queensland Government to meet the state's current affordable housing

With its own two steel production facilities Lyndons can also process, cut and bend reinforcing bar and coil to specifications. Lyndons produces and stocks a comprehensive range of steel reinforcing, lintel bars, cages & accessories, including:

- | | | |
|--|--|--|
| <p>REINFORCING MESH</p> <ul style="list-style-type: none"> • Square rib mesh • Rectangular rib mesh • Trench rib mesh • Ute mesh <p>BAR</p> <ul style="list-style-type: none"> • Rebar 250R/500N • Pool steel (250S) • Starter bars • Corner bars • Fitments and more | <p>REINFORCING ACCESSORIES</p> <ul style="list-style-type: none"> • Bar chairs • Dowels, sleeves & caps • Dowel cradles & accessories • Plastic safety bar guards • Building film & tape • Tie wire • Expansion joints • Keyed joints • and much more... | <p>PREFABRICATED CAGES</p> <ul style="list-style-type: none"> • Footing cages • Pile cages • Large foundation cages • Beam cages • Pad footing cages • Column cages • Bored piers • Complex bespoke cages |
|--|--|--|

**Burleigh | Southport | Windsor | Salisbury | Maroochydore
Rockhampton | Gladstone | Mackay | Townsville | Cairns**

AGS CIVIL

Always Good Solutions

With over 20 years experience, we can provide civil construction services and plant hire in Brisbane, Logan City, Ipswich, Beaudesert and beyond.

We provide a range of civil works such as detailed excavations, road works, bulk earthworks, subdivisions and more.

When you need civil contractors that you can rely on, AGS Civil is your premier choice.

Specialising In:

- Industrial developments including cut to fill to level 1 specifications
- Detailed earthworks, installation of services & stormwater, pavements
- Carpark & road intersection upgrades
- Road widenings
- Agricultural works including dams, driveways, site cuts
- Environmental remediation works,
- Rail shut down works & maintenance of Telstra tower tracks



Equipment

- 5t Combo
- Posi Tracks
- Double Drum Roller
- 14T Excavators
- 22T Excavators
- 30T Excavators
- Body Trucks (Tippers)
- Truck & Dog
- Water Truck

1800 AGS CIVIL (1800 247 248)
info@agscivil.com.au | www.agscivil.com.au



and rental-supply challenges, with increased interstate and overseas migration expected ahead of the Brisbane 2032 Olympics and beyond.

Located in Brisbane’s western corridor, Stockland Providence is currently home to more than 4000 residents, and over the next 20 years, this is expected to grow to approximately 20,000 residents.

The community will ultimately provide a diverse mix of more than 7,000 homes, six schools, a village centre, childcare, sports ovals, and parks.

Stockland General Manager – Queensland Development, David Laner said it’s important that new suburbs have the right infrastructure in place, and co-funding and partnering on key road projects with the Queensland Government means people can move into their new homes faster.

“As one of Australia’s leading creators of affordable communities, Stockland has a role to play in addressing housing supply. We’re committed to providing high quality, affordable housing options across the housing continuum from first homebuyers to downsizers, as well as those retiring,” said Mr Laner.

“Stockland’s work with Ipswich City Council and Economic Development Queensland means we have delivered Providence to a high standard and continue to meet the needs of the growing local community,” he added.

What is the Barrams Road project scope and how will it benefit our Providence community?

The project will connect Barrams Road into Sandstone Boulevard; which then connects onto the Centenary Highway. This means that Barrams Road will essentially provide a second access to Providence.



We are a professional concrete pumping company offering all size pumps to South East Queensland and Northern Rivers region.

Phone: 0421 370 276
E: leigh@pumpconcp.com.au



There will also be a direct extension of Barrams Road into the future town centre, which will occur at a later date. In the interim, Barrams Road will connect into the existing Barrams Road; which also looks to receive an upgrade by early 2024 in line with the opening of the newly upgraded Barrams Road.

On a larger scale, Barrams Road is critical to unlocking the south-eastern development precinct of the Ripley Valley Priority Development Area and provides the missing link between the existing road network servicing Providence Estate and Intrapac’s Cumner Road construction. The Barrams Road project value is approximately \$15 million.

What will the construction duration be for Barrams Road, and where will work take place?

The upgrade will be completed by early 2024, and Stockland has commissioned SEE Civil to carry out this project.

Work will take place along the alignment of Barrams Road, and parts of the existing road have been closed to allow construction of both the existing and new Barrams Road. This work will occur from Monday to Saturday between 6:30am and 6:30pm in accordance with Council allowed hours of construction.

What are the sustainability and environmental considerations for this project?

We will be creating fauna furniture similar to a crawl post shown in the below picture. This will be installed through the Barrams Road eastern culverts to facilitate safe, dry



Professionals in Commercial Fencing
Our People, Our Equipment, Our Expertise


Ford Brothers Fencing provides the building and construction industry with fencing services Australia wide.

Our expertise extends to all types of commercial and security fencing.

FBF is fully accredited to ISO9001:2015, ISO 45001:2018 and ISO14001:2015 and is a Qld Department of Main Roads accredited installer for acoustic barriers.

Specialising in:

- Fauna fences (Koala / Frog)
- Acoustic Barriers (ply/ batten)
- Modular Wall Barriers
- Chain wire and rural fencing
- Pedestrian Safety
- Tubular Handrail
- Sleeper Retaining Walls
- Gates
- Shade Cloth
- Dust Screen
- Bollards (Timber /Steel / Recycled Plastic)

Phone : (07) 5370 9155 | Web: www.fbfencing.com.au

passage for animals. The Barrams Road eastern culvert has also been designed with consideration for fish passage to facilitate both upstream and downstream migration. Free movement along waterways and onto floodplains is an essential requirement for the survival and productivity of many species of Queensland fish. Most species must move into different habitats for breeding or rearing of young, or to access critical habitats for food and protection.

Our local surroundings and environment play a vital role in shaping our community's natural landscape, so revegetation works will also be a key priority for this project. Subcontractors and Suppliers

Subcontractors and Suppliers

- Jacks Pipe And Civil Pty Ltd
- Detection Services Pty Ltd
- Civil Rent Pty Ltd
- QLD Mulching P/L
- Advanced Civil Group Pty Ltd
- Jet Excavators & Trucks Pty Ltd
- H2flow Hire
- Winc Australia P/L
- Tip Truck Solutions
- Global Synthetics Pty Ltd
- MT Marrow Blue Metal Quarries Pty Ltd
- CV Infrastructure Services Pty Ltd
- Leesnico Pty Ltd
- Active Hire
- Advanced Environmental Services
- Sniffers Plant Hire Pty Ltd
- Position Partners Pty Ltd
- All About Lifting & Safety Pty Ltd
- Voight Contracting Pty Ltd
- Sitesec Pty Ltd
- Jimel Transport Pty Ltd
- Stone Pipeline & Civil Pty Ltd
- Ozz Crete Pty Ltd
- AGS Civil Pty Ltd
- Lyndons Pty Ltd
- Austek Asphalt Services Pty Ltd
- Wear Parts Australia
- Active Hire
- Jet Excavators & Trucks Pty Ltd
- Barro Group Pty Ltd
- Bemcove Pty Ltd
- Master Steel
- Nifty Earthworks Qld Pty Ltd
- Crushing Dynamics (Qld) Pty Ltd
- Allenview Turf
- Traffic Control Innovations
- Pumpcon Concrete Pumping Pty Ltd
- Retaining Wall Systems
- Spencer Civil & Earthworks Pty Ltd
- Pitcon Drainage And Formwork
- Pipe Vision Australia Pty Ltd
- Pimpama Pits & Pipes Pty Ltd
- Chucky Contractors Pty Ltd



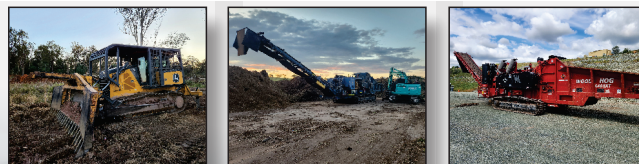
- TVE Pty Ltd
- Crown Concrete Sawing And Drilling
- Qld Kerb & Channel
- Hex Plant Hire
- Supagreen Lawn Programmes Pty Ltd
- Enviropost Australia
- Advanced Manhole Formhire Pty Ltd
- Roo Constructions Pty Ltd
- Classic Concrete Pumping
- A & C Watercart Hire
- Celotti Pty Ltd
- Concut Pty Ltd
- Qld Crane Hire & Rigging Pty Ltd
- Ford Brothers Fencing
- Tactile Systems Australia

Queensland Mulching

Landclearing and Mulching Contractors

Specialising in:

- Large scale landclearing and mulching
- Shearing of timber
- Greenwaste recycling
- Vegetation grooming
- Regrinding and removal of mulch
- 800hp to 1125hp track horizontal grinders
- Topsoil and mulch screening
- Walking floor and low loader hire



Mark: 0418 718 019
Jaiden: 0439 662 247

Email: markqldmulching@outlook.com

H2flow
Hire

Ph: (07) 3715 8799

Email: water@h2flow.com.au
 Website: www.h2flow.com.au

- Water trucks & trailers
- Wet or dry hire
- Drinking water
- Mini tippers

- Mini water trucks & trailers
- Mini vacuum trucks & trailers
- Pressure cleaner trailers
- Sandbag filler trailers
- Polymer application trailers